



## The Toronto

Heighten the success rate of your refuse management program with the Toronto. This expanded metal container is the only one of its kind in the series. The vivid mesh-like design creates high visibility of the internal colored liners, maximizing stream recognition. Be the recycling leader in your industry by adding containers to your program that are constructed with sustainability in mind.

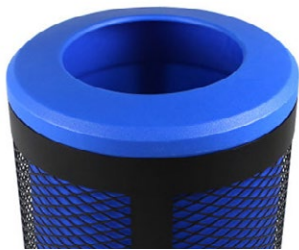
*The Bulk Discount Waste Container Experts*  
Call us for Quantity Discounts and Custom Designs!

855.675.5698 [www.trashcanswarehouse.com](http://www.trashcanswarehouse.com)

## FEATURES

- Add personality and durability to your program with this powerful expanded metal design
- Diversify collection with up to 3 streams
- Endure the elements with this rust and UV proof container
- Option to secure product to the ground to enhance security

## LID OPTIONS



Single - Blue



Single - Black



Double



Triple

Flat Top Dimensions: 23" Diameter x 37.5" H



Canopy - Single



Canopy - Double



Canopy - Triple

Canopy Lid Bin Dimensions: 23" Diameter x 46" H



Dome - Black



Dome - Blue

Dome Lid Bin Dimensions: 23" Diameter x 49" H

## SPECIFICATIONS

CAPACITY  
45 Gallon

STOCK BODY COLOR

● Black

STOCK LINER COLORS

● Blue ● Green

● Black

\*Green Only Available  
for Triple